

REFUGEE SUPPORT AND EDUCATION CENTER

Introduction

The war in Ukraine has resulted in the biggest refugee crisis in Europe in post World War II history. Currently an estimated 10 million Ukrainians are displaced by Russian atrocities, most of them in Western Ukraine, but an estimated over 2 million in neighboring Poland.

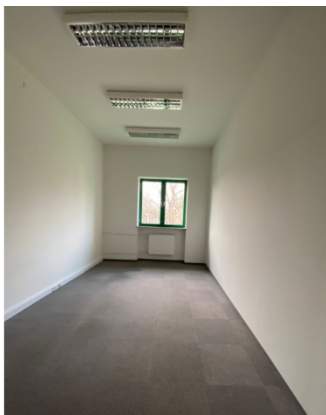
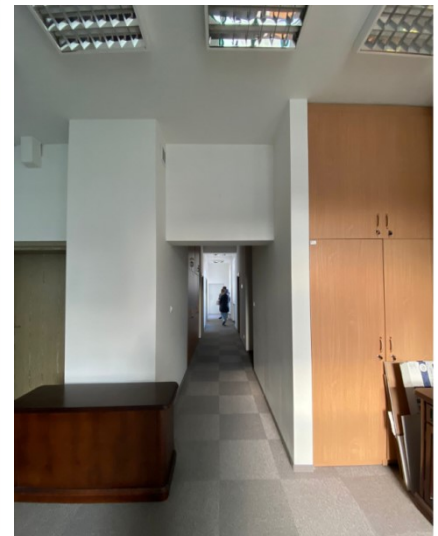
The refugees, predominantly women and children (estimated 97% of all refugees), have been receiving astounding help from the Polish society, which has provided them shelter, mainly in private homes, and the country has quickly adopted emergency laws, allowing for receiving the same social benefits, right to work, recognition of vocational qualifications for many professions, as are available to Polish nationals.

The raging war in Ukraine, which is now in its second month, will not end anytime soon. Even if so, numerous cities, such as Kharkiv, Kherson, Mariupol, Volnovakha and the suburbs of Kiyiv remain destroyed or booby trapped with mines by the retreating Russians, leaving the displaced with nowhere to return.

Such a situation calls for many immediate measures, which are taking place, but also for support in the mid and long term. As part of the Rotary bond of friendship, the Rotary clubs RC Long Neck Sunrise, RC Duluth Skyline and RC Easton have reached out to their Rotary friends in Poland, in particular RC Warszawa Fryderyk Chopin and RC Warszawa Konstancin and together formed a partnership, under the auspices of their relevant Rotarian Districts (D-2231, D-7630 and D-5580) to create exactly such response, to allow Ukrainian refugees in Poland to seek the most important help and services they need.

The Project

Based on RC Warszawa Konstancin relationship with a local cooperative bank (Bank Spółdzielczy in Piaseczno), a facility offering over 300 square meters of first class office space is available to be used rent free, at the cost of utilities and upkeep, until 31 December 2022.



The facility is located on two floors, with a separate entrance, has eight large separate rooms and two large conference rooms, as well as one fully equipped kitchen and one kitchenette, fully furnished bathrooms. Even some office furniture is still available for use and one room equipped to serve as a doctor's medical room. The facility is located next to a small soccer field (orlik) and a park.

The idea is to setup a refugee integration and support center that would be run by the refugees for refugees. The functions that could

be available include:

- day care center for children
- psychological support center
- vocational training center
- Polish language training center
- Refugee integration center for social events
- Basic medical checkups
- Many more functions

In order to enable the functioning of the facility, a reputable partner with experience to operate the facility has been found – the foundation Pro Akademika operating at the University of Humanities and Social Sciences in Warsaw.

<https://www.fundacjaproakademika.pl/>

<https://english.swps.pl/>

The University, its scholars and the foundation has already extensive expertise in the field of providing Polish language training, vocational training, psychological support in support of the refugees. Out of over 15,000 students studying at the University, over 400 were from Ukraine and they have all been properly helped and cared for as part of the activity of the Foundation. Led by a team of experts under the guidance of prof. Paweł Pyrka, they bring in the experience and expertise needed to operate and run the center, including potentially obtaining further funding beyond the current refugee crisis.

The functions of the help center could be extended, through the use of an online platform. At the moment, the usage of a professional online platform for 500 accounts has been secured free of charge.

Costs of the center

The main cost components include:

1. Furbishing of the facility with equipment:
 - a. Children furniture for nursery/preschool
 - b. Multimedia equipment
 - c. Laptops/PCs
 - d. Reception desk
 - e. IT - software to manage appointments
2. Fixed running costs:
 - a. Heating
 - b. Electricity
 - c. Water/sewage
 - d. Waste
3. Variable running costs:
 - a. Administrative staff to run the center
 - b. Trained psychiatrists
 - c. Language teachers
 - d. Nursery staff

A detailed budget / cost calculation is in the making (to be developed on April 12)

Role of Rotary

The role of Rotary clubs and districts would be to obtain funding and supervise the spending of the funds that would be raised. We also would recommend selected displaced Rotarians from Ukraine to take part in running the center.

As of 15 April 2022 the following funding has been secured (fx rate: 1 USD = 4,26 PLN):

- 50.000 PLN (11,737 USD) – Piotr Kotowski Foundation
- 13.140 PLN (3,128 USD) – RC Warszawa Fryderyk Chopin
- 6.770 USD – RC Duluth Skyline
- 200.000 PLN (46,948 USD) – D-2231 direct grant
- 25.000 USD – D-5580 Rotary Foundation Disaster Response Grant

Further potential sources of funding to be secured:

- Rotary Foundation Disaster Response Grants (25.000 USD per district)
- Rotary Foundation Regular grant
- Private donors
- Private fundraisers
- Corporate donors
- Rotary club contributions
- EU funding as ultimate source of long term funding of the center

To make contributions please forward funds to the following bank accounts:

Stowarzyszenie Rotary Club Warszawa Fryderyk Chopin
ul. Kwitnacej Laki 2B
02-971 Warszawa, POLAND
KRS: 0000550515, www.rotaryfryderykchopin.org.pl

USD donations: PL 53 1140 2004 0000 3112 1498 7798

EUR donations: PL 20 1140 2004 0000 3912 1498 7806

PLN donations: PL 70 1140 2004 0000 3302 8088 9422

BIC/SWIFT: BREXPLPWMBK

As the needs for how the funds will be appropriated evolve over time and there may be a necessity to also address other needs of Ukrainian refugees within the project, it may potentially be possible that some of the funds will be reassigned within this project to address those needs.

We ask for your support and contributions in making this project a long lasting success!

Rotary Club Duluth Skyline (Minnesota, USA)
Rotary Club Lewes-Rehoboth Beach (Delaware, USA)
Rotary Club Long Neck Sunrise (Delaware, USA)
Rotary Club Warszawa Fryderyk Chopin (Warsaw, Poland)
Rotary Club Warszawa Konstancin (Konstancin-Jeziorna, Poland)
Rotary District 2231 (Poland)
Rotary District 5580 (Minnesota, Wisconsin, North Dakota, Ontario)
Rotary District 7630 (Delaware, Maryland)